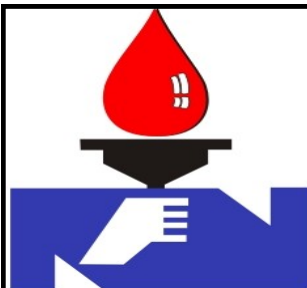


NATIONAL REFINERY LIMITED



HSE NEWS LETTER

December-2022

HSE Newsletter Contents:

Pg. #

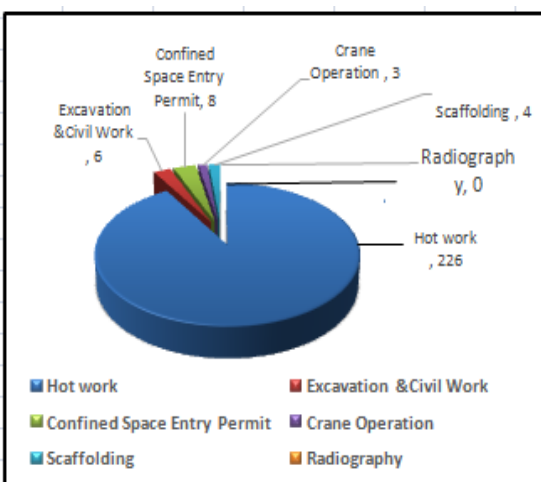
Permit to Work	1
Safe Man Hours	1
Safety Training Session at HRDC	2
Fire Drills by Fire Department	2
Incident / Ill health & Loss Time Injury	3
Environmental Monitoring Conducted By HSE Department	3
Safety Article: Workplace-related safety issues	4

Question or concerns regarding this news letter may be directed to:

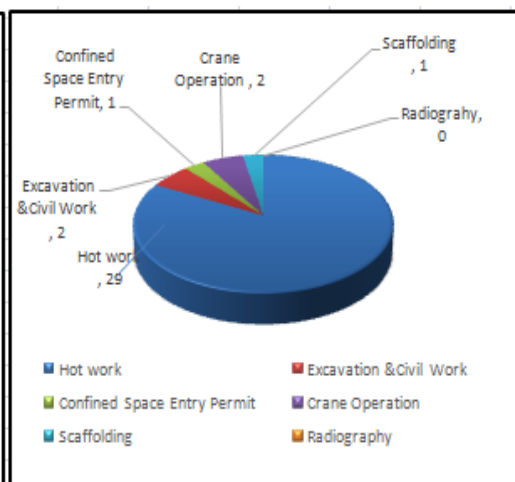
Manager HSE
National Refinery Limited (NRL), 7-B,
Korangi Industrial Zone,
Karachi-74900,
Pakistan.
Email:
mgrhse@nrlpak.com

Permit to Work System at NRL Korangi & K.T

Permit is regarded as a written agreement between the person authorizing the work and the person receiving the permit to work. Following Permit to Work were issued in the Month of **December 2022** at Korangi & K.T.



Korangi Refinery



Keamari Terminal

Safe Man Hours

NRL Safety Board is updated by second week of every month. Safety Board shows the number of Safe Man-hours worked by NRL MPT and Non MPT Staff. By the Grace of All Mighty Allah and joint efforts by all of us, we have achieved **1.795814841** Million safe man-hours without Lost Time Injury (LTI) as on **31th December 2022**. Let us all give top priority towards safety, as there is no any job, which cannot be done in a safer way.

**1.795814841 Million
Safe Man-hours till
31th December 2022**



SAFETY TRAINING At Operation Block Meeting Hall

Class room training:

“ Importance of Process safety management” conducted by **HSE Department at Operation Block meeting hall.**

Safety refresher trainings can be a major resource for helping prevent an injury or accident from happening in the workplace. It is the direct tool for bringing awareness of safety issues and procedures to all types of workers (from regular employees, contractors or even visitors). An effective safety induction can also ensure not just safety awareness affecting the person completing a job task or role but also ensure the safety of their coworkers too. It can set out important processes to follow , such as how to report an incident, safety procedures for working at heights, confined spaces, access control, restricted areas



Fire Drills Conducted by Fire Department

♦ Fire Drill:

Every Thursday at 1000 hrs and Wednesday at 1530 hrs , planned fire drill conduct by the fire protection department at Korangi Refinery and Keamari terminal respectively, to check the preparedness or effectiveness of fire-fighting staff and firefighting equipment at the time of emergency. Also training regarding usage of fire fighting

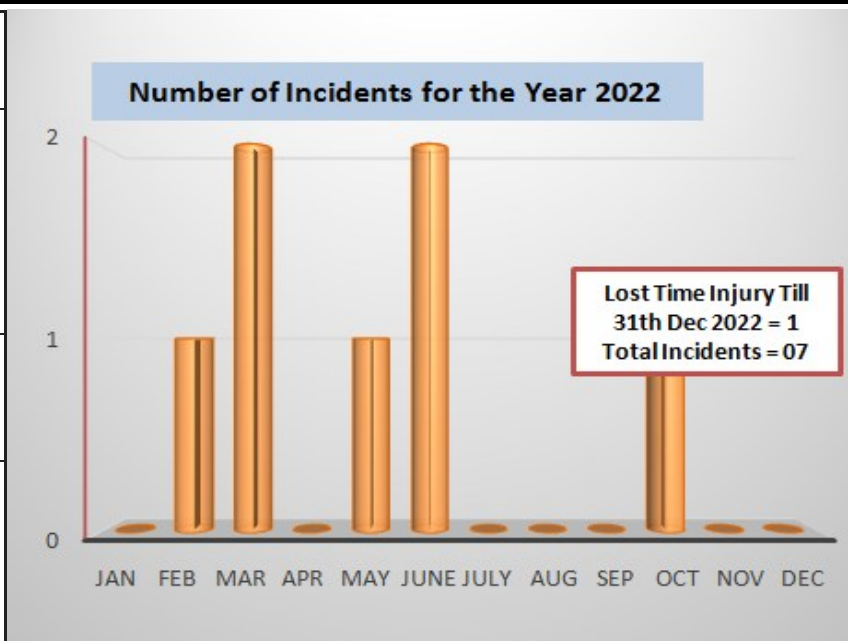


OUR AIM: NO ACCIDENTS



INCIDENT / ILL HEALTH AND LOSS TIME INJURY

Incident	An incident is an unplanned, undesired event that adversely affects completion of a task.
Near miss	A near miss describes incident where no property was damaged and no personal injury sustained, but when given a slight shift in time or position, damage and / or injury easily could have occurred.
Accident	An accident is an undesired event that results in personal injury, property damage and equipment damage.
Loss Time injury (LTI)	If any NRL employee on duty had on the job accident, which render the employee medically unfit to resume of his duty next 24 hours is considered to be lost time injury (LTI).



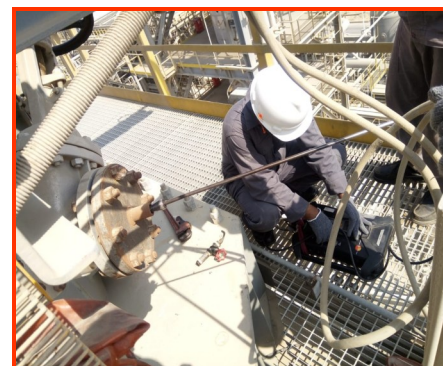
INTERNAL / EXTERNAL MONITORING CONDUCTED BY HSE DEPARTEMENT



Ambient Air Monitoring



Drinking Water Sampling



Stack Emission Testing



Fugitive Emission Testing



Noise Monitoring in Plant



Vehicle Emission Monitoring

Workplace-related safety issues

What is Workplace Safety?

Workplace safety refers to the limitation of elements that can cause harm, accidents, and other negative outcomes in the workplace. It represents a culmination of policies, behaviors, and precautions that work to limit hazards, accidents, and other kinds of harm in a work environment.

More often than not, workplace safety directly affects the productivity and well-being of your workforce, and these directly affect the quality of output of your business. Hence, employers must strive to create a safe environment that offers an acceptable level of risk for all employees.



What are Workplace-related safety issues

- Safety hazards.
- Biological hazards.
- Physical hazards.
- Ergonomic hazards.
- Chemical hazards.
- Work organization hazards.
- Environmental hazards.

Safety Tips in the Workplace

- Always Report Unsafe Conditions.
 - Keep a clean workstation.
 - Wear protective equipment.
 - Take breaks.
 - Don't skip steps. ...
 - Stay up to date with new procedures or protocols.
 - Maintain proper posture.
- Offer guidance to new employees.

