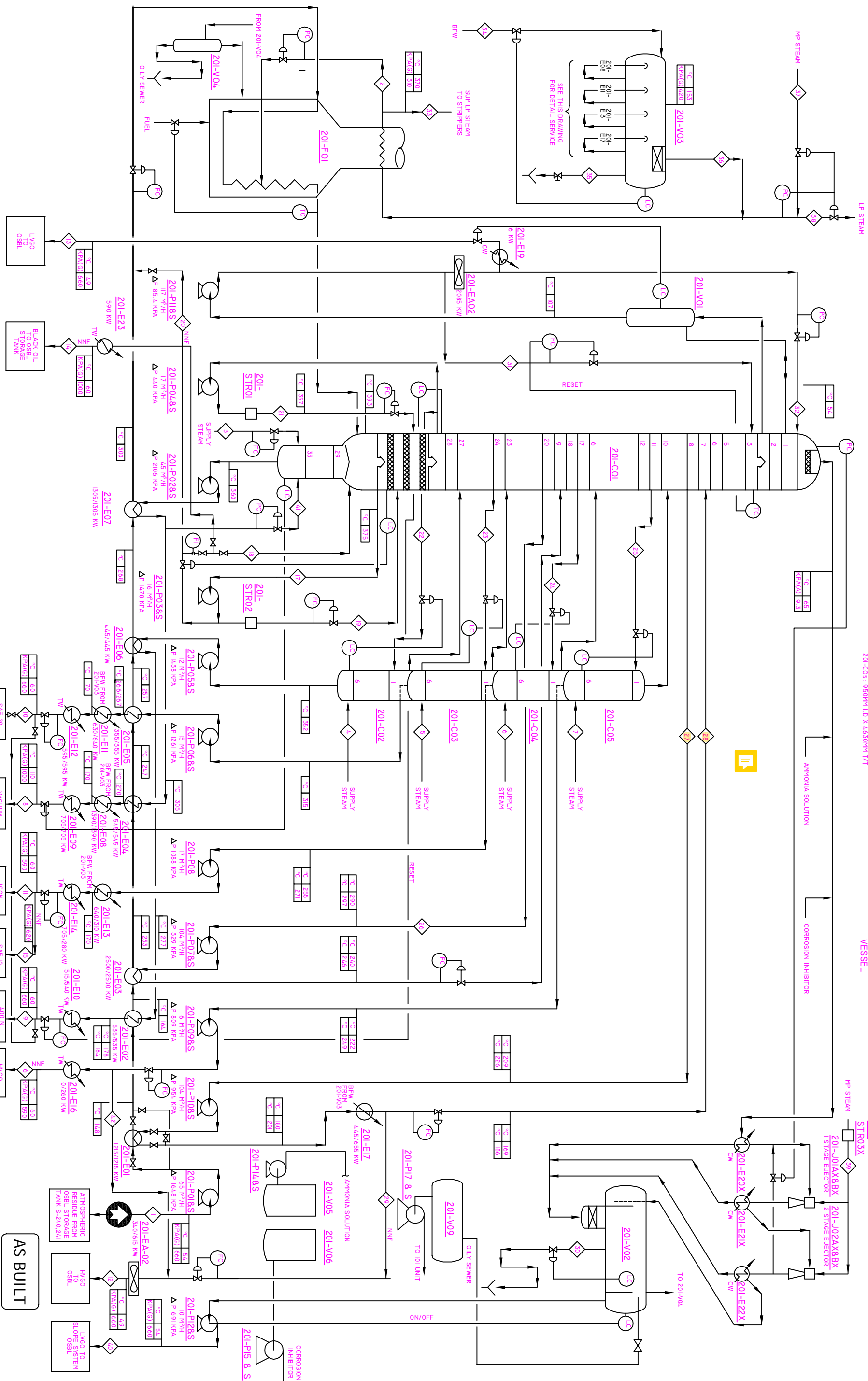


- FUUL GAS** 1600MM I.D X 6100MM T/T
- STEAM DRUM** 1000MM I.D X 2550MM T/T
- VACUUM HEATER** TOTAL DUTY 6750 KW
- VACUUM TOWER** 1500MM I.D X 4650MM T/T
- LVGO SURGE DRUM** 1000MM I.D X 2550MM T/T
- SIDE STREAM STRIPPERS**
 - 201-C02 - 950MM I.D X 5530MM T/T
 - 201-C03 - 950MM I.D X 5730MM T/T
 - 201-C04 - 950MM I.D X 5870MM T/T
 - 201-C05 - 950MM I.D X 4630MM T/T
- 201-V09** TAIL WATER VESSEL
- 201-V06** CORROSION INHIBITOR VESSEL
- 201-V05** AMMONIA VESSEL
- OVHD CONDENSATE RECEIVER** 1500MM I.D X 6650MM T/T



- NOTES:**
- 1- OPERATING CONDITIONS ARE FOR FEED AT 110 °C.
 - 2- HEAT DUTY NORMAL CASE/S/AE-10 CASE.
 - 3- HEAT EXCHANGERS DUTIES DO NOT INCLUDE OVERDESIGN.
 - 4- PUMPS ARE RATED CAPACITY.
 - 5- ABSORBED DUTY INDICATED FOR FIRED HEATER.

E S ENGINEERING SOLUTIONS
 FALAK NAZ PLAZA
 MAIN SHAHRAH-E-FAYSAL, KARACHI
 KARACHI-PAKISTAN

NATIONAL REFINERY LIMITED
 7-3 KIBORANG INDUSTRIAL AREA
 KARACHI-PAKISTAN

VACUUM DISTILLATION UNIT

SCALE: DWG. NO. E9646-201-01 REV. 1

NO.	REV.	DATE	DESCRIPTION
1	0		FOR INFORMATION
2	1	25-06	VECTORIZED AND UPDATED FOR INFORMATION